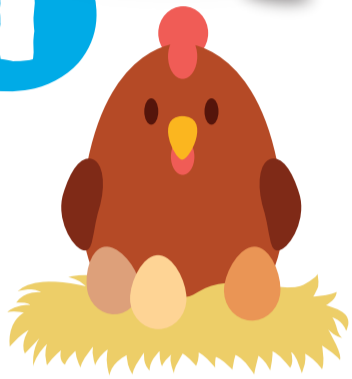




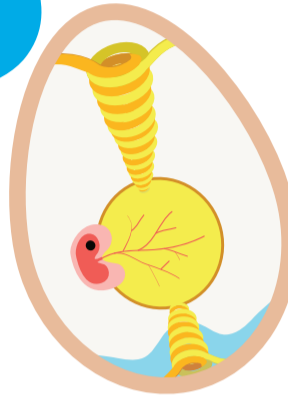
The life cycle of a chicken.

1



A hen lays a fertilised egg.

2



The embryo begins to grow in the egg.

3



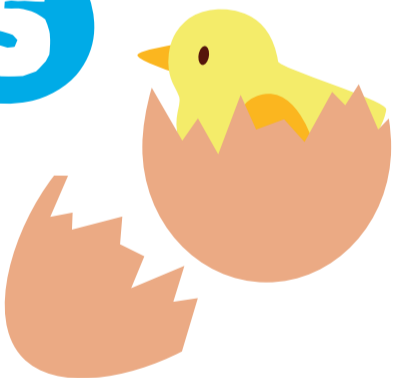
The embryo develops over 21 days before it is ready to hatch.

4



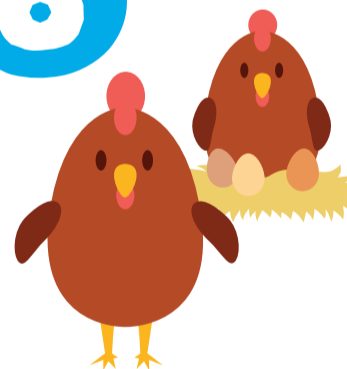
At the end of the chick's beak is a bump called the 'egg tooth.' The chick uses this tooth to make a tiny hole then break the shell.

5



The chick hatches out of the egg.

6



Once chickens are a year old, females are called hens and males are called roosters.

