

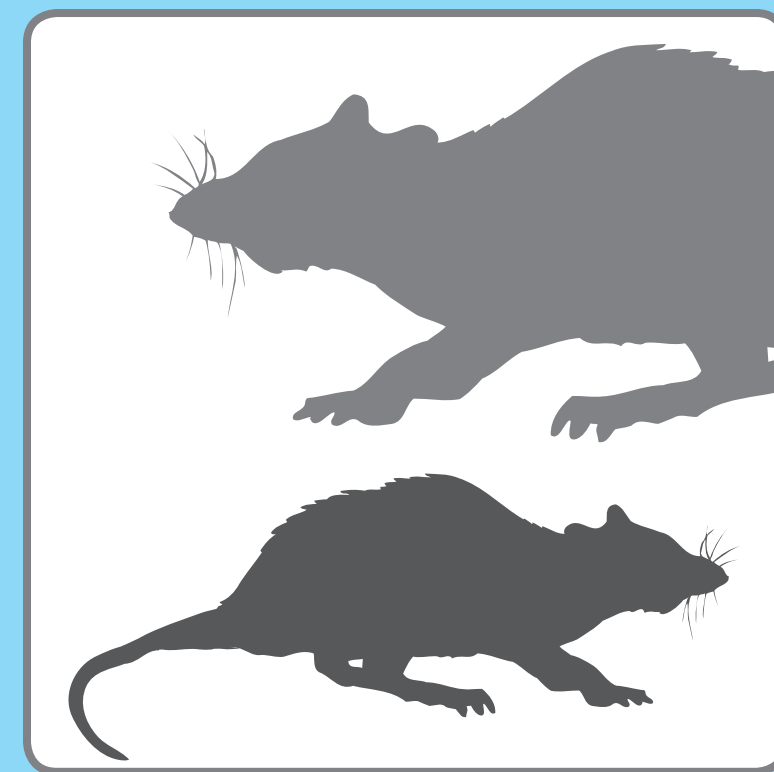


# Reduce *Salmonella* On the Farm

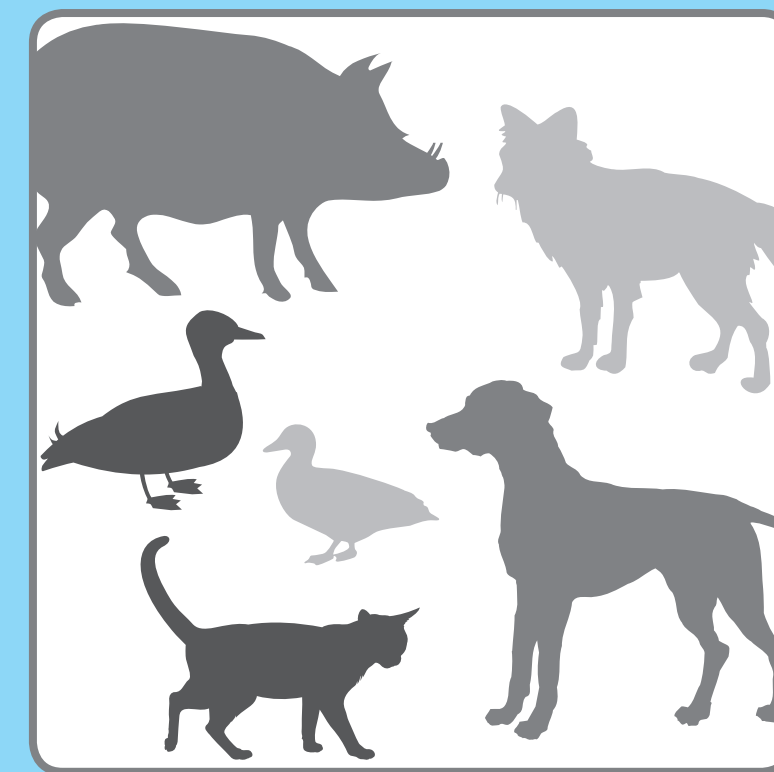
## THESE CAN SPREAD OR HARBOUR SALMONELLA:



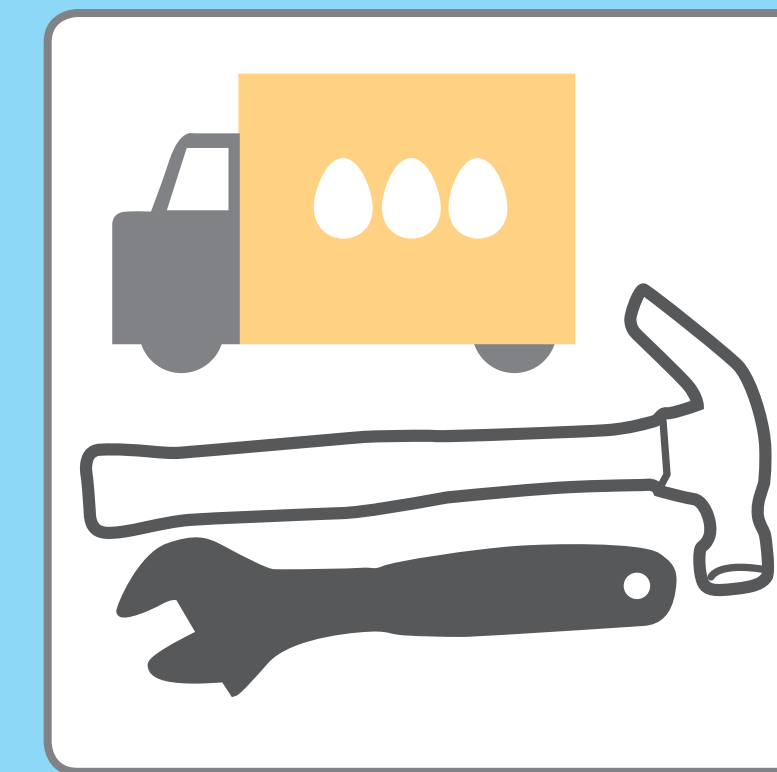
Insects



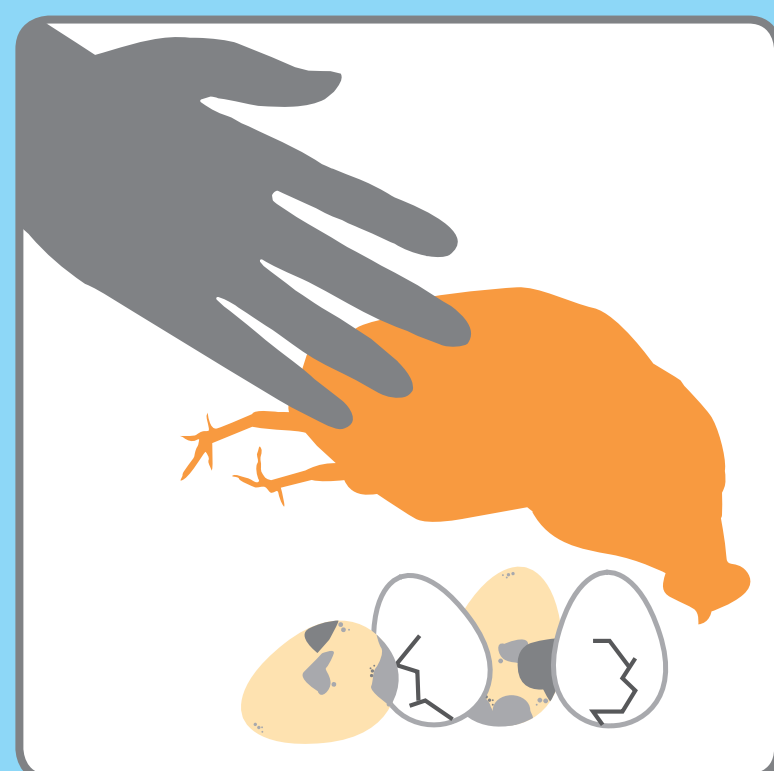
Rodents



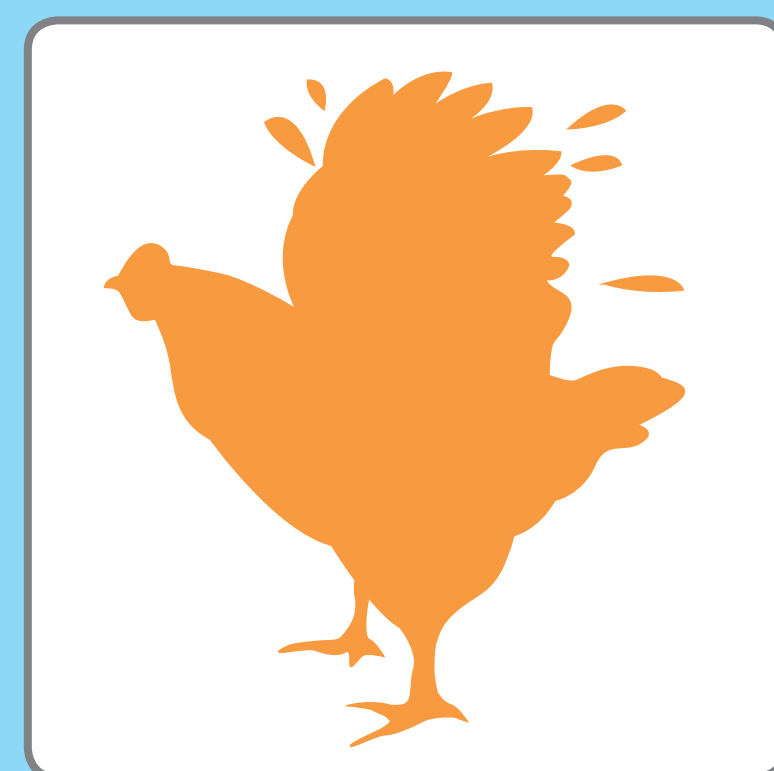
Animals



Vehicle and equipment



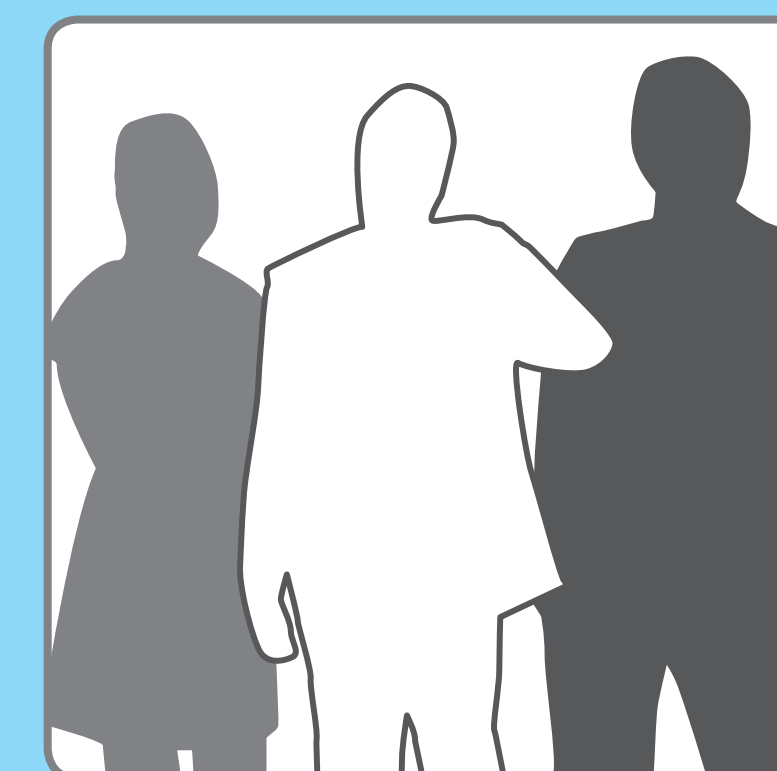
Staff handling dead birds and rejected eggs



Hen health

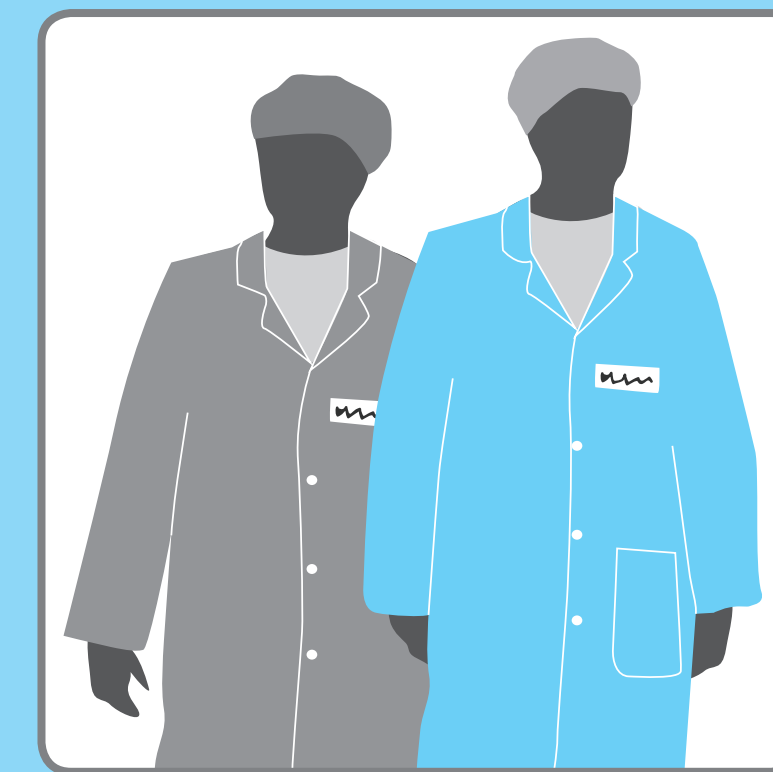


Debris and vegetation



People

## THESE CAN LIMIT THE SPREAD OF SALMONELLA:



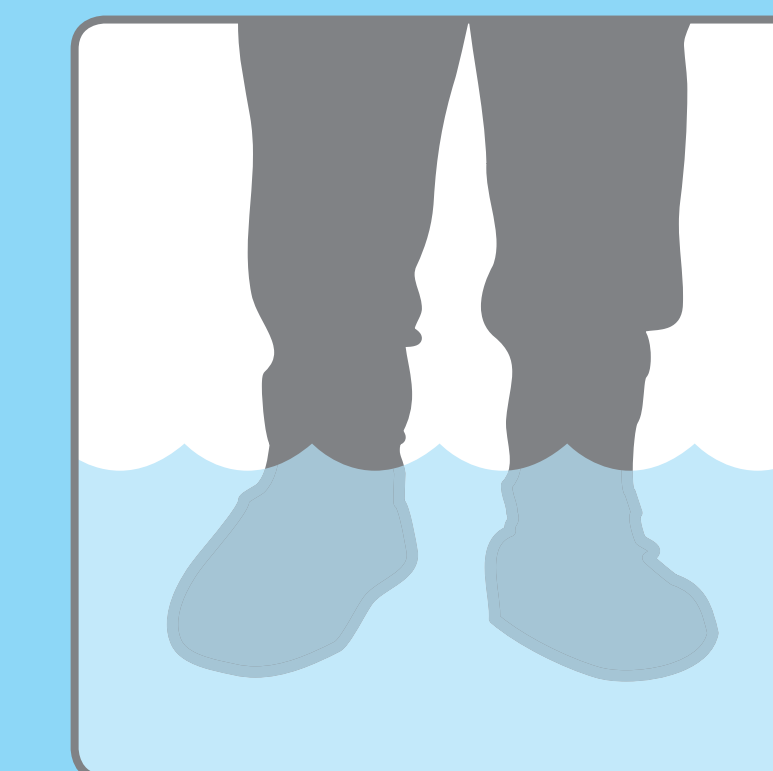
Maintaining good biosecurity



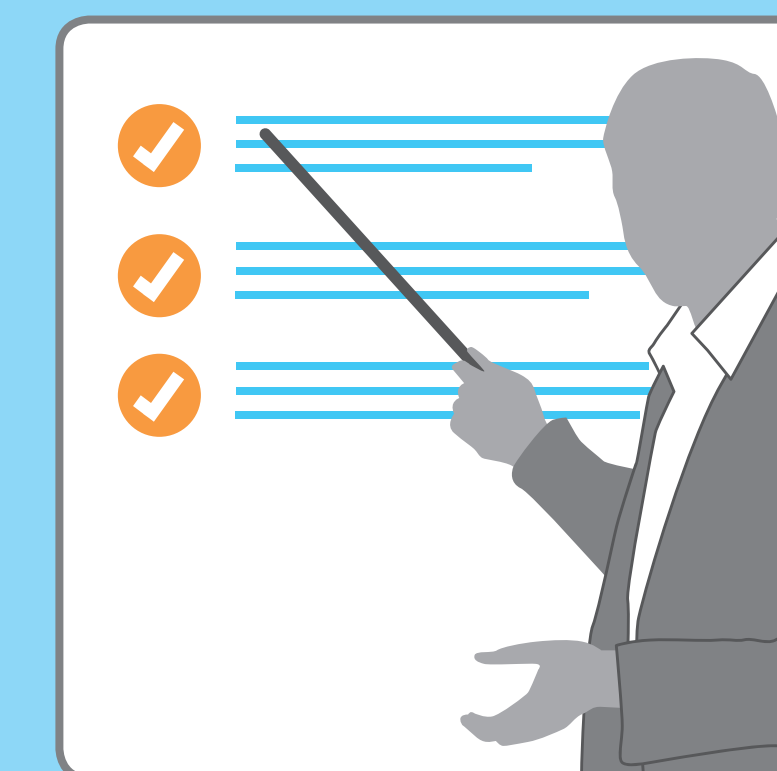
Certified feed supplier



Cleaning out sheds

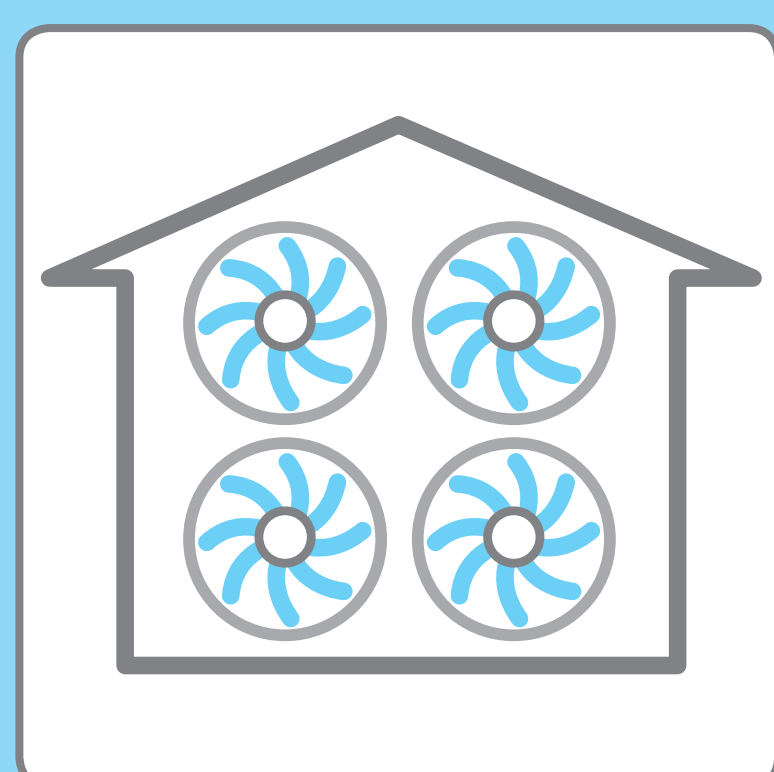


Using footbaths

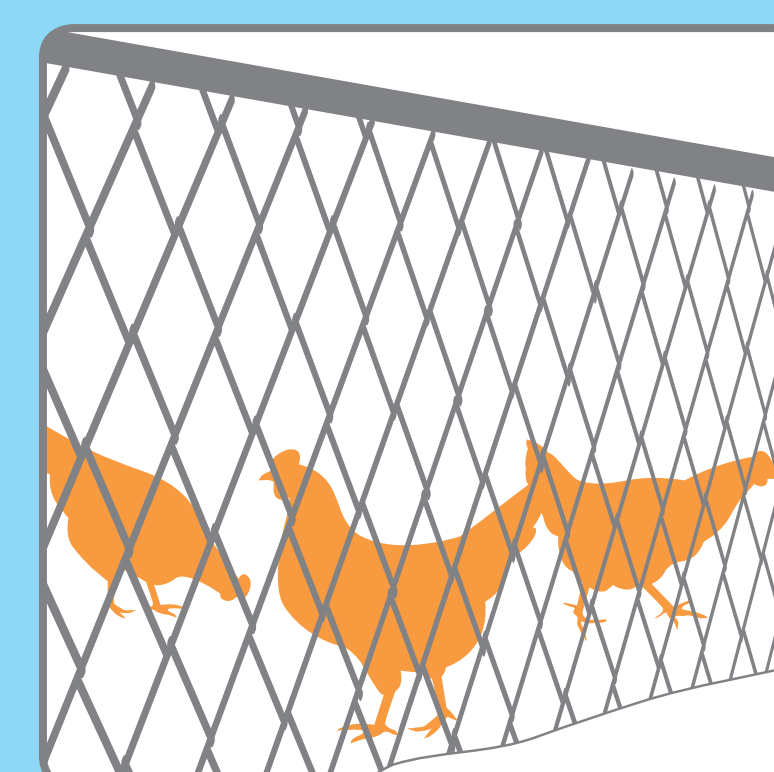


Training

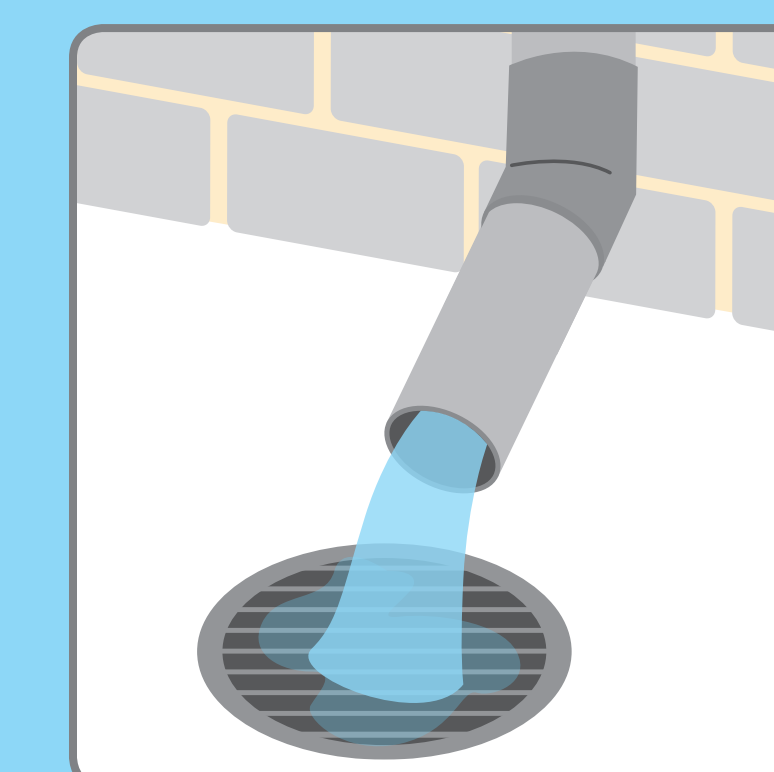
## THESE CAN REDUCE THE PRESENCE OF SALMONELLA:



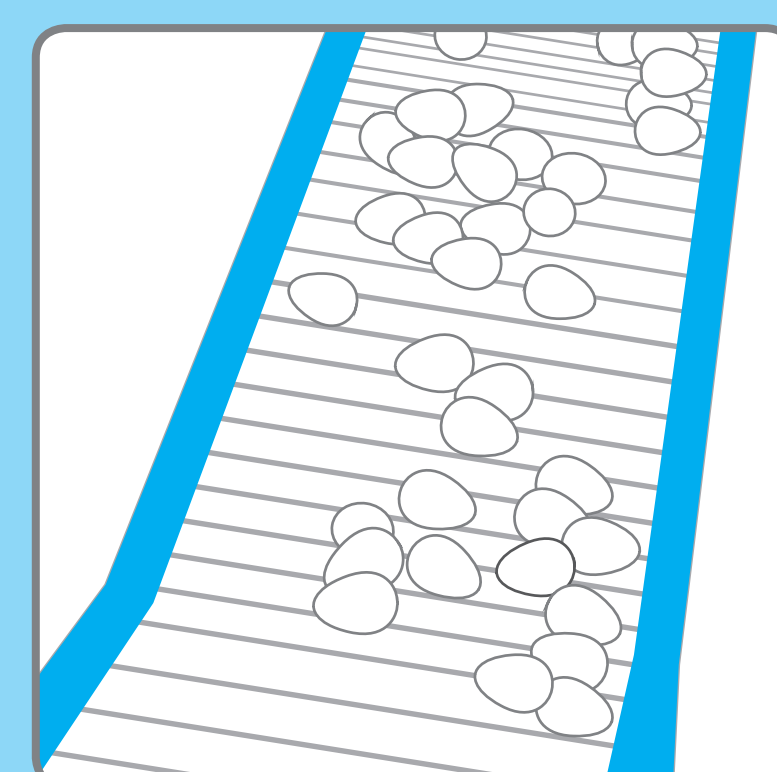
Good ventilation



Biosecurity

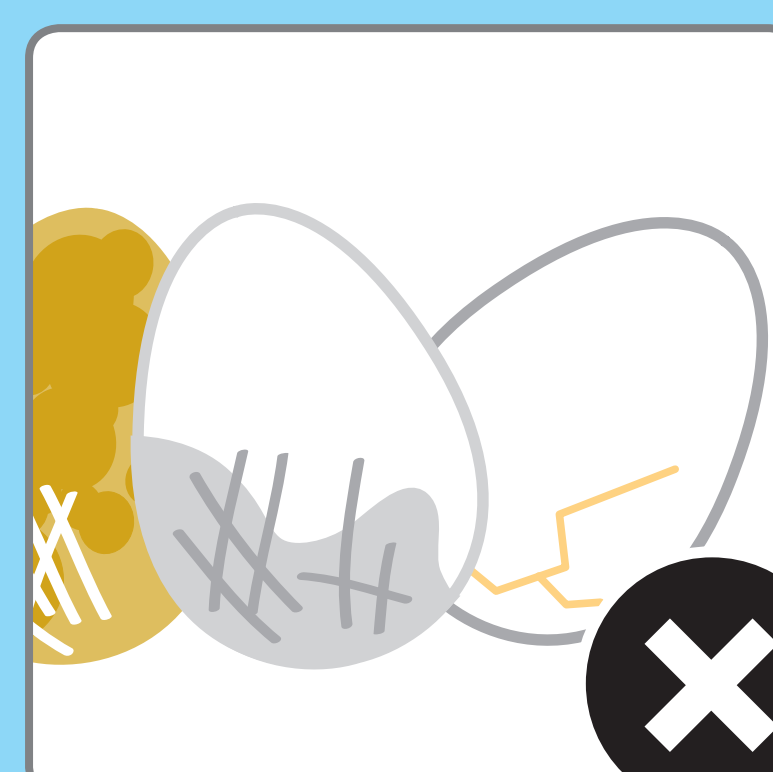


Good drainage

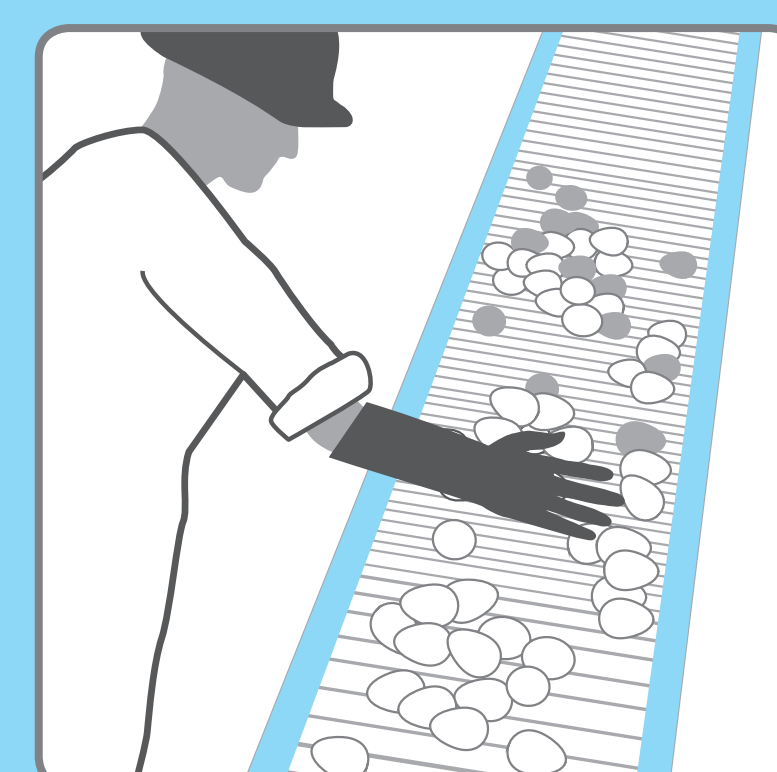


Clean egg transfer equipment

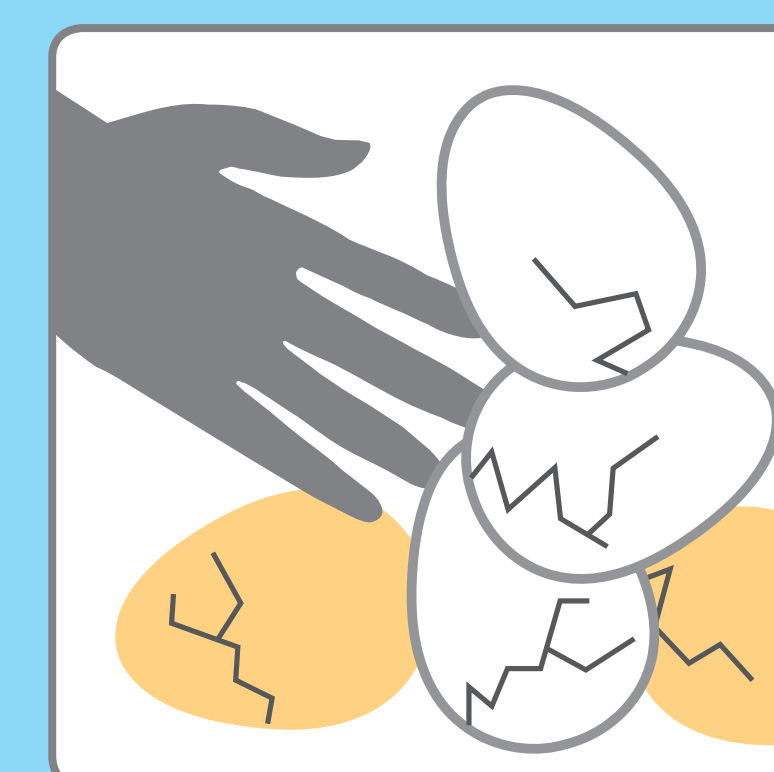
## MINIMISE THE ABILITY FOR SALMONELLA TO PENETRATE INTO EGGS BY:



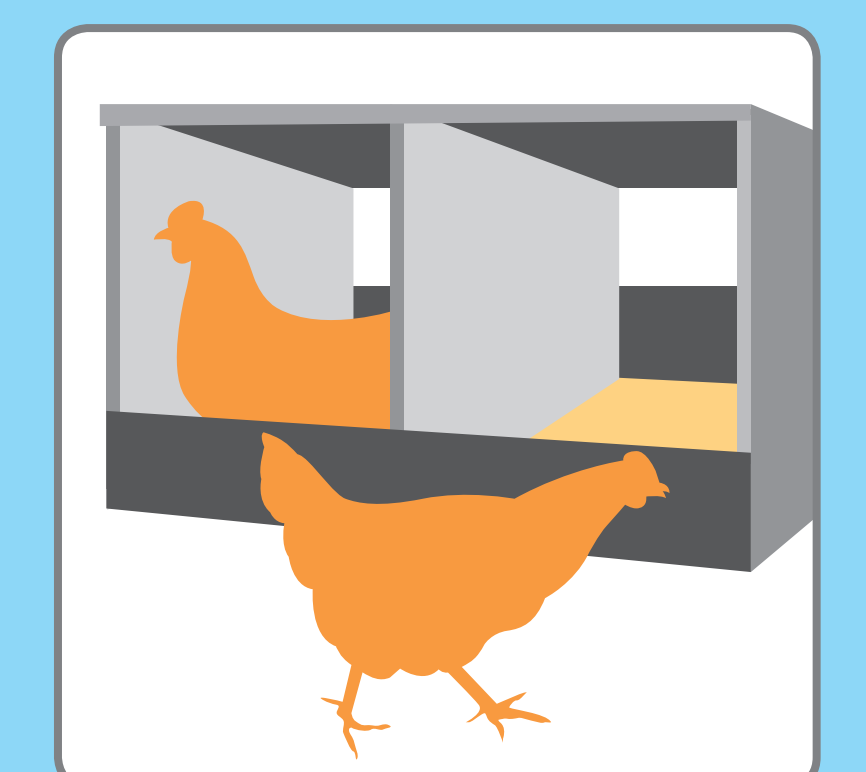
Discard leakers and grossly dirty eggs



Maintaining clean and hygienic egg equipment



Reducing factors that increase the level of cracked and dirty eggs



Cleaning nest boxes after depopulation